

Jackson County Public Water Supply District #13  
99 Lake Lotawana Road  
Lake Lotawana MO 64086-9715  
816-578-2249 Fax 1-866-736-3350

**WATER**

**DISTRICT**

**PWSD # 13**

**DEVELOPERS**

---

**Jackson County Public Water Supply District #13**  
**99 Lake Lotawana Road Lake Lotawana MO 64086-9715**  
**816-578-2249 Fax 1-866-736-3350**

January 1, 2022

## **System Development Charges**

	System Development Charges	Connection Charges	Deposit	Total
¾ inch	5,500.00	\$375.00	\$100.00	\$5,975.00
1 inch	\$12,250.00	\$480.00	\$100.00	\$12,830.00
1.5 inch	\$23,500.00	\$760.00	\$100.00	\$24,360.00
2 inch	\$37,000.0	\$875.0	\$100.00	\$37,975.00
3 inch	\$73,000.00	Plus Meter Cost	\$100.00	
4 inch	\$113,500.00	Plus Meter Cost	\$100.00	
6 inch	\$226,000.0	Plus Meter Cost	\$100.00	

---

Jackson County Public Water Supply  
District #13  
99 Lake Lotawana Road  
Lake Lotawana MO 64086-9715  
816-578-2249 Fax 1-866-736-3350

November 1, 2006

To: New Service Customers, Plumbers, Contractors and Suppliers

From: Charles Dellario

Re: New water taps 12/14/05

---

**Effective February 1, 2006**

The Water District will no longer supply all the materials for a new water service. We will only supply the water meter, saddle and corporation for the ¾" and 1" meter. Larger meters will be as before.

The owner of the new house or his/her contractor will supply K copper from the main to the water meter, the water meter setter, meter well and meter well lid and ring.

**The Water District will only accept the following**

<u>Meter Setter</u>	<u>¾ inch</u>	<u>1 inch</u>
AY McDonald Mfg. Co.	#22-218WD22-33	#22-418WD22-44
Ford Meter Box Co.	#VHC72-18W-44-33	#74-18W-44-44
<u>Meter Well</u>		
MidWest Meter Co.	#A2000 (18" x 36")	A2000 (24" x 36")
<u>Meter Well Lid &amp; Ring</u>		
AY McDonald Mfg. Co.	#74M32C-T	Same
Ford Meter Box Co.	#C32-T	Same
<u>Double Setter Brass Tee or Y Connection</u>		
Ford Meter Box Co.	Brass tee	T444-443
A Y McDonald Mfg. Co.	Brass tee	4760-22-43
Ford Meter Box Co.	Brass Y	Y44-243

Jackson County Public Water Supply District #13  
 99 Lake Lotawana Road  
 Lake Lotawana MO 64086-9715  
 816-578-2249 Fax 1-866-736-3350

February, 14 2008

To: New Service Customers, Plumbers, Contractors and Supplies

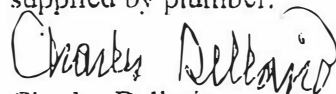
From: Charles Dellario  
 Water District # 13

Subj: Meter setting parts for Water District #13.

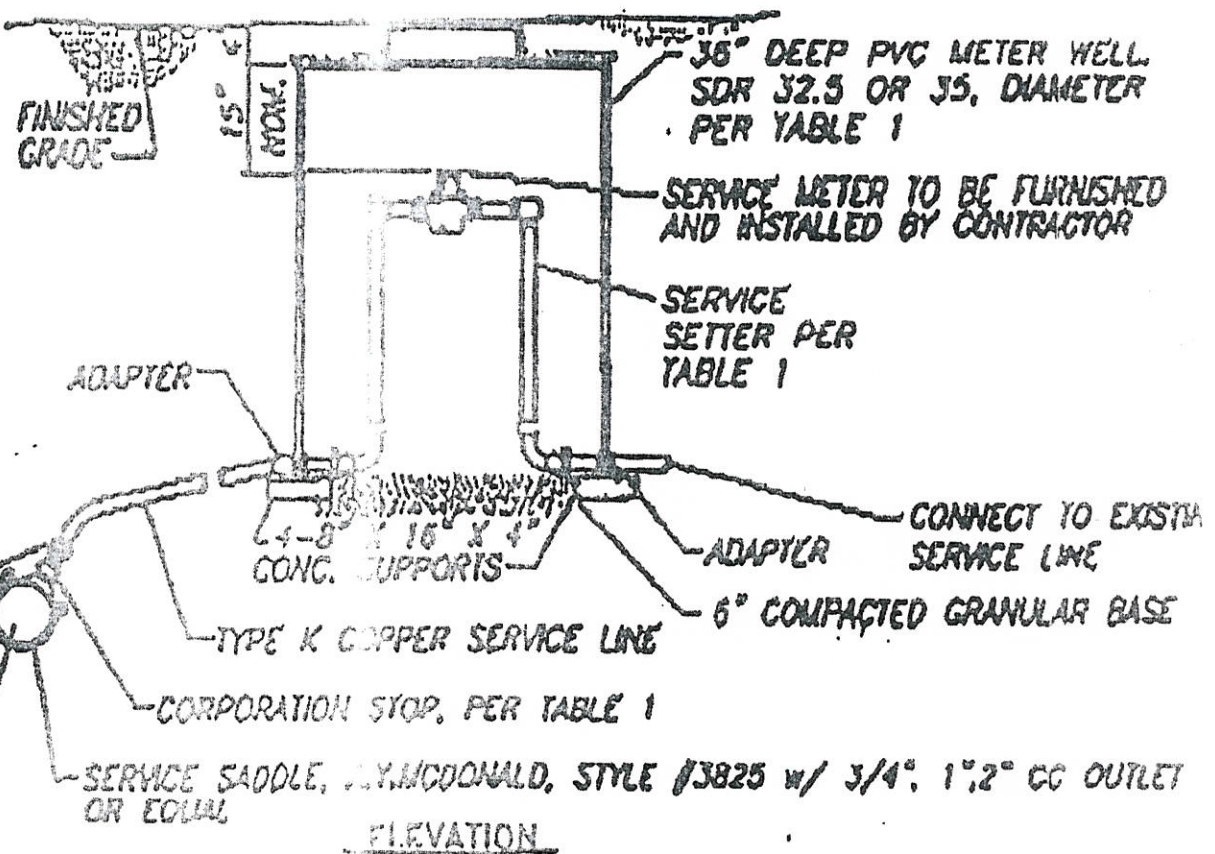
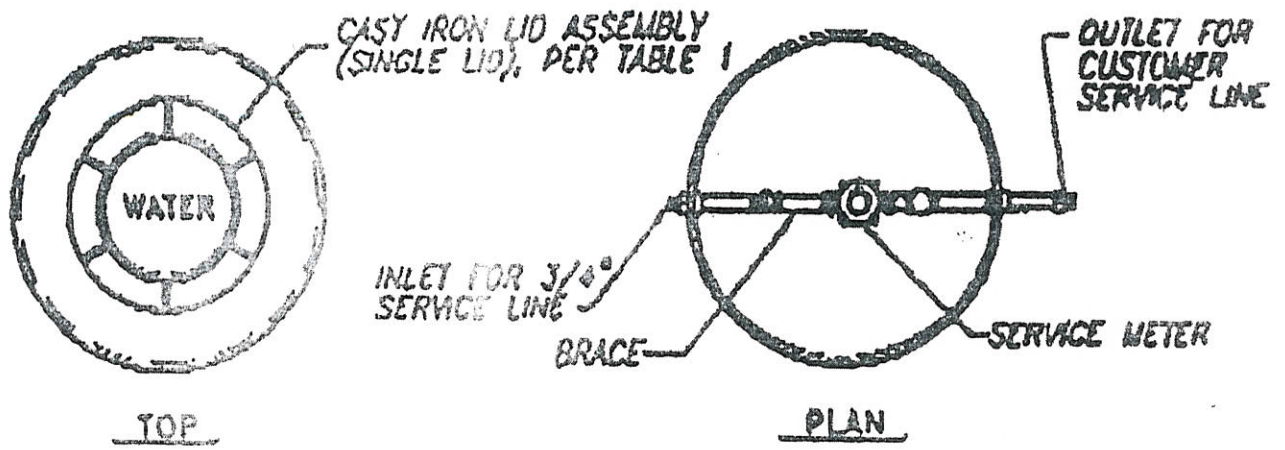
The following items are meter setting parts for a 1 1/2" and 2" meter.

	2" Meter		1 1/2" Meter
1.	Meter well		Same
	a. 36" x 36" PVC Well		
2.	Ring and Lid		
	a. AY McDonald 74M32C-T		Same
	b. Ford Meter Box Co. C32-T		
	c. Steel adapter 36" with 18" opening		Same
3.	Meter setter		
	a. A Y McDonald 20B718WDF775		Same
4.	Meter adapter 2" x 1 1/2"		
	a. None		Ford A67

The Water District only supplies the 2" corporation stop and 2" tapping saddle for both 1 1/2" meter and 2" meter. All copper and other parts are supplied by plumber.



Charles Dellario  
 Water District # 13



**TYPICAL METER SETTING**  
**FOR 5/8\" x 1/4\", 1\", AND 2\" METERS**  
 NOT TO SCALE

Jackson County Public Water Supply  
District # 13  
99 Lake Lotawana Road  
Lake Lotawana MO 64086-9715  
816-578-2249 Fax1-866-736-3350

---

WATER EASEMENT DISTRICT	MM (Double setter)	5 ft.
-----water main-----		
CITY ROW		11 ft.
<hr/>		
CURB		
<hr/>		
ROADWAY		
<hr/>		
CURB		
<hr/>		
CITY ROW		11 ft.
	M (Single setter)	

---